

THERMAX™ Total Wall System Overview

The THERMAX™ Wall System is more than an insulated wall – it's a systematic approach to achieving efficiency at every level: simplified design, streamlined construction and optimized energy consumption for a reduced carbon footprint. Dow's four-in-one system with THERMAX™ (ci) insulation, WEATHERMATE™ Flashing, and STYROFOAM™ CM Series Spray Polyurethane Foam, meets all applicable IBC and ASHRAE requirements for continuous insulation, moisture mitigation, air sealing, and vapor barriers. This complete system eliminates the need for exterior gypsum sheathing, applied air/vapor barrier membranes, and extensive site coordination, making it both cost effective and easy to install.

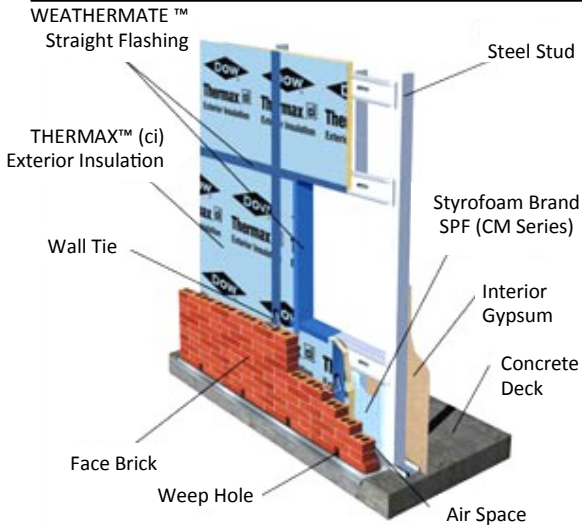


Photo courtesy of Trinity Christian School

| Thermal Layer | |
|--|--|
| ASTM C518, R-value | THERMAX™ ci: 6.5 R /in Styrofoam™ SPF (CM Series) CM 2030: 6.0 R / in CM 2045: 6.0 R / in |
| Water-Resistive Layer | |
| ASTM E331: | Pass – No water penetration during 2 hours of pressurized testing. |
| ASTM C272 Water Absorption, % Volume | THERMAX ci: <0.05 % Styrofoam SPF (CM Series) CM 2030: 1.2 % CM 2045: 1.2 % |
| Air Sealing Layer | |
| ASTM E2357: @ 5/8" thick THERMAX™ ci with 1.5" of Styrofoam™ SPF | Code: 0.04 cfm / ft ² Tested: 0.01 cfm / ft ² Improvement over code: 250% |
| Vapor Retarding Layer | |
| ASTM E96, perms | <0.03 = Class 1 Retarder (Vapor Impermeable) |

| | |
|-------------------------------------|--|
| Back up Applications | Steel Stud |
| NFPA-285 Approval | Passed |
| ASTM E84, (Burning Characteristics) | Flames Spread: 25 Smoke Developed: <450 |
| UL Ratings | V482, V454, U425, U424 |
| Joint Treatments | Dow Weathermate™ Flashing |
| Edge Treatment | Square edge (5/8" & 1") Ship-lapped (1.55" or greater) |
| Facer Technology: | 4 mil BLUE™ acrylic-coated aluminum facer 1.25 mil embossed aluminum backing |
| Warranty | <ul style="list-style-type: none"> ◆ 15 Year Limited Thermal Warranty ◆ 6-month Exposure Warranty ◆ 6-month Limited Weathermate Flashing Exposure Warranty |
| LEED Points | EA Credit: 1-19 points MR Credit 2: 1-2 points MR Credit 3.1 & 3.2: 1-2 points MR Credit 4.1 & 4.2: 1-2 points MR Credit 5.1 & 5.2: 1-2 points EQ Credit 2: 1 point EQ Credit 7.1: 1 point ID Credit 1.1: 1 point ID Credit 1.2: 1 point ID Credit 1.3: 1 point |

See more case studies, details, and information at www.thermaxwallsystem.com